

Managing White Line Disease

Travis D. Burns, CJF, TE, EE, FWCF and Lauren Trager, DVM

White line disease (WLD) is a pathology that has long frustrated farriers, veterinarians, owners, and other members of the equine profession. WLD is described as a progressive hoof wall separation originating at the solar surface of the hoof and migrating proximally. It is thought to be the result of opportunistic keratinopathogenic organisms invading the non-pigmented stratum medium. The separation does not affect the stratum internum or dermal tissues.¹ Historically, WLD has been referred to by many other terms, including seedy toe, hollow hoof, hoof rot, onychomycosis, etc.^{1,2} Even though “white line disease” has become the commonly utilized term for this disease, it is a misnomer as the disease process does not actually affect the white line of the horse’s hoof capsule. Therefore it is this author’s opinion that the equine community should begin to use the term “white zone disease” or another term that describes the anatomy affected (non-pigmented stratum medium/white zone).

The cause of WLD has long been debated. Although several theories have been described, none have been proven. The current theory of WLD etiology as described by O’Grady, Moyer and others is that opportunistic, keratinopathogenic microorganisms invade the non-pigmented stratum medium of the hoof wall following an initial separation caused by a mechanical stress or weakness, trauma, abnormal or excessive moisture exposure, or some combination.^{1,2} These organisms degrade the keratin in the hoof wall exacerbating the separation. Furthermore, dirt and debris typically fill the separation, acting as a mechanical wedge forcing the wall apart.



Fig. 1 - Cases of WLD are often first noticed by farriers during routine trimming/shoeing visits. An area of separation in the hoof wall that is filled with dirt/debris is noted.

Continued from page 1

Although WLD has been reported all over the world in many different environments, the highest incidence of WLD appears to be in areas with exposure to high moisture/humidity. It affects horses of all ages, breeds, sex, and type. Many factors appear to predispose horses to WLD that include but are not limited to: poor environment, repetitive cycling of the hoof from wet to dry conditions, various hoof wall distortions, flexural limb deformities, chronic laminitis and weak/brittle hoof walls resulting from genetic or nutritional abnormalities.

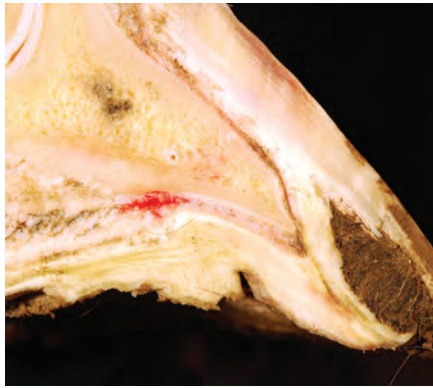


Fig 2. - There can be rather large areas of separation filled with dirt/debris despite maintaining a healthy appearance of the outer hoof wall.

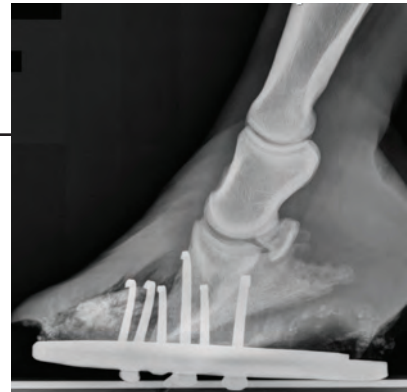


Fig. 3. - Lameness is usually only noted when extensive separation has occurred, resulting in an instability of the distal phalanx within the hoof capsule

Cases of WLD are often first noticed by farriers during routine trimming/shoeing visits. An area of separation in the hoof wall that is filled with dirt/debris is noted (Fig. 1). When removing the dirt/debris with a hoof knife or curette, an area of undermined hoof of varying degree is revealed. After the dirt/debris is removed, portions of white/grey powder like hoof wall are typically seen before reaching a healthy margin. There can be rather large areas of separation filled with dirt/debris despite maintaining a healthy appearance of the outer hoof wall (Fig. 2). Lameness is usually only noted when extensive separation has occurred, resulting in an instability of the distal phalanx within the hoof capsule (Fig 3).

Continued on page 3

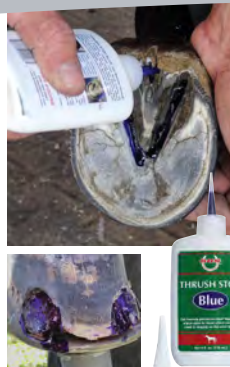
Fight Hoof Disease and Win

Find more Hoof Care Products online at www.farrierproducts.com/hoofcare.html



SBS Sav-a-Hoof Liquid, Gel and Spray

- SBS Sav-a-Hoof Fights White Line Disease, Seedy Toe, Thrush, Candida Yeast, Aerobic and Anaerobic Bacteria, Mold and Fungus
- Liquid is Great for extremely wet or dry conditions. Apply 2 times weekly to horn, sole and Frog
- Spray formula can be used in hoof soaking boots. Binds to hoof protein for long lasting protection
- The unique time release formula of the gel lasts for weeks. Use in nail holes, cracks and defects. Apply along horn rim, deep into sulcus, under shoes and pads



SBS Thrush Stop Blue

- Gentle to hoof tissue
- Blue "marking" gel formula does not run
- Fades when it's time for new application
- Stops stubborn bacteria and fungi
- Does not contain the carcinogen Formalin

Allen's Blue Powder

- A medicated thrush preventative, developed by farrier Todd Allen
- Sprinkle on the frog and sole area of the foot as a preventative measure and as a treatment for thrush



Continued from page 3

Many cases of WLD are treated/managed by farriers during routine visits. Farriers should be encouraged to debride small areas of separation to a healthy margin whenever possible. If areas of separation are to be covered by a horse shoe they should first be packed with an antiseptic packing. The preferred packing of the Equine Podiatry Service (EPS) at the Virginia Maryland College of Veterinary Medicine (VMCVM) is a mixture of oakum, venice turpentine and copper sulfate (Figs 4 & 5). For barefoot horses with small separations, affected portions of hoof wall should be removed to prevent mechanical prying on the affected area as well as to prevent further packing of dirt/debris while allowing the owner to clean and treat the area (Fig 6).



Fig. 4 & 5 - The preferred packing of the EPS at VMCVM is a mixture of oakum, venice turpentine and copper sulfate.

Areas of separation that are extensive, expand, or do not resolve should be managed by a team consisting of a veterinarian and a farrier. Radiographs, specifically 0° lateromedial and 0° dorsopalmar, should be used to identify the extent of the separation and to guide trimming/shoeing. The principles of treatment are to resect the affected hoof wall and debride to as healthy a margin as possible (exposes the area to UV light and air), stabilize the hoof capsule, recruit the sole and frog for load sharing, and remove predisposing factors (environment, excess leverage, etc.).



Fig. 7 - Carbide cross cut burrs^c.

Fig. 6 - Affected portions of hoof wall should be removed to prevent mechanical prying on the affected area.

To resect the hoof wall a combination of half round nippers, hoof knives, loop knives, and motorized rotary tools (Dremel^b) are used. Carbide cross cut burrs^c are useful to prevent dust and heat buildup (Fig 7). Following resection many topical products can be applied to further disinfect and dry the hoof. The preferred topical treatment at the VMCVM is 7% tincture of iodine. It is important to note that all topical treatments are of little to no value when there is insufficient debridement. Figures 8, 9, & 10 show a sequence of debridement prior to topical treatment.



Fig. 8, 9, 10 - A sequence of debridement prior to topical treatment.

Continued on page 4

Continued from page 3

If there is enough healthy hoof wall remaining a shoe should be applied.

For areas of small resections a normal shoe can be applied. For larger more extensive resections, utilizing a shoe/setup to spread load away from the wall onto the sole and frog and to support the distal phalanx within the hoof capsule should be used. Such shoe/setup include but are not limited to heart bars, heel plates with impression material, Equi-Pak^d, and frog pads. When there is not enough hoof wall to safely and securely attach a shoe with nails, a glue on shoe can be applied. It is important to note that affected areas should not be covered with adhesive (Fig. 11). Ultimately, if there is not enough healthy wall to attach a shoe the foot should be bandaged or placed into boots until there is sufficient wall to nail or glue to.

In conclusion, horses being treated for WLD should be kept in a clean and dry environment with minimal variations in moisture level. The hooves should be cleaned out and treated at least once daily. They should be rechecked by the vet/farrier team at 4 week intervals for continued debridement and to monitor the hooves for appropriate growth.



Fig. 11 - It is important to note that affected areas should not be covered with adhesive.

TRAVIS BURNS, CJF TE EE FWCF

Travis is Lecturer and Chief of Farrier Services in the Equine Podiatry Service at the Virginia-Maryland College of Veterinary Medicine in Blacksburg, Virginia. Travis is active as a clinician and competitor and is currently a candidate for President of the American Farrier's Association.



HORSESHOE NAILS WITH COPPER SHIELD TECHNOLOGY

- ✓ Cutting edge technology
- ✓ Hoof/Horn quality improves
- ✓ Reduces rust and wear inside the hoof wall
- ✓ Healthier hooves
- ✓ Ideal for all horses
- ✓ Competitive price



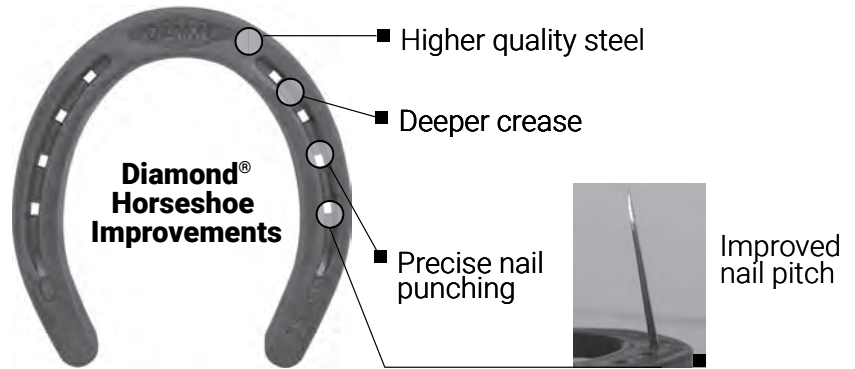
Try the Liberty Cu Hybrid Available in Sizes 3, 4, and 5

The Cu Hybrid combines the best features of the most popular horseshoe nails by Liberty. The modified head design works well in concave and shoes punched for E-head nails.

LEARN MORE AT [FARRIERPRODUCTS.COM/LIBERTYCU.HTML](https://www.farrierproducts.com/libertycu.html)

Kerckhaert Puts the Shine Back on the Diamond Brand

In July of 2015, when the Royal Kerckhaert Horseshoe Factory announced they had completed the purchase of the Diamond Farrier and Tool Company, the brand was showing a little tarnish. Diamond lost the position in the professional farrier market they enjoyed prior to the early 80's. The iconic brand had not seen any significant design changes for decades, quality was diminished and availability of the product was not reliable.



Kerckhaert's vision for the Diamond product line included enhanced design and quality of existing products and the development of new shoes and tools that would advance the legacy of Diamond as a "one-stop" brand for farriers.

To-date there have been a number of product improvements and the cumulative effect has been quite significant. While the basic dimensions and shapes of the shoes are similar, the materials are better - and design, especially the crease, nail placement and punching, has been improved; providing the Diamond user with a better product. The photos below show the marked difference in the Diamond horseshoes, along with comparisons to the competitor shoe. The comparison of the shoes makes it clear why Diamond has become the easy choice for farriers who are looking for a quality shoe at a competitive price.



NEW DIAMOND CLASSIC RIM



ST. CROIX LITE RIM



NEW DIAMOND CLASSIC HEELED



ST. CROIX LITE HEELED

DIAMOND CLASSIC RIM

Better Steel Quality

V-Crease

Clean punching

Sole Relief

Broad Toe (easy to shape for fronts & hinds)

DIAMOND CLASSIC HEELED

Heels Aligned with Travel (Parallel with travel for additional traction and stability)

Better Steel Quality

V-Crease

Clean punching

Sole Relief

Continued on page 6

Continued from page 5



NEW DIAMOND
BRONCO PLAIN

ST. CROIX
PLAIN

DIAMOND BRONCO PLAIN

Better Steel Quality

V-Crease

Clean punching



NEW DIAMOND
CLASSIC PLAIN

ST. CROIX
LITE

DIAMOND CLASSIC PLAIN

Better Steel Quality

V-Crease

Clean punching



DIAMOND BRONCO TOE AND HEEL

Heels Aligned with Travel

Elongated Toe Bar

Height of heels and toe (Truer flat shoe on hard surface)

Better Steel Quality

V-Crease

Clean punching

Sole Relief



NEW DIAMOND
BRONCO TOE
AND HEEL

ST. CROIX
LITE TOE &
HEELED



NEW
DIAMOND
DRAFT

DIAMOND DRAFT

Better Steel Quality

V-Crease

Clean punching

Elongated heels can be turned down for extra traction or cut to fit hoof

DIAMOND SPECIAL

Better Steel Quality

V-Crease

Clean punching

Wider web for increased protection and support

Generic pattern more easily shaped into front or hind

Improved nail pitch



NEW DIAMOND
SPECIAL

ST. CROIX
SURE-FIT FRONT



NEW
DIAMOND
PONY

DIAMOND PONY

Better Steel Quality

V-Crease

Clean punching

Light shoe for the smallest hooves

DIAMOND HIND

Better Steel Quality

V-Crease

Clean punching

Truer hind pattern more easily shaped

Improved nail pitch



NEW DIAMOND
HIND

ST. CROIX
SURE-FIT HIND

Continued on page 7

Continued from page 6

Kerckhaert Introduces the New Diamond Tracker Horseshoe

Recently, Kerckhaert introduced the new Diamond Tracker horseshoe (right). This shoe features a beveled toe and solid heel area and has been produced in a generic pattern. The steeper bevel in the toe provides good breakover with less chance of slipping and solid heels provide additional support in soft terrain. Compared to the very round shape of the St. Croix Eventer, the Tracker has a more natural shape in the toe and even more so in the branches. Easily shaped into front or hind patterns, the Tracker reduces the number of shoes a farrier needs to carry on their truck and requires less time and effort in shaping for the best fit. The Tracker is quickly making converts out of many Eventer users thanks to Kerckhaert's innovative design and attention to detail.



NEW DIAMOND TRACKER



ST. CROIX EVENTER FRONT

One Shoe, Countless Shapes - Saving You Time and Money

Not generic pattern; need both fronts and hinds



NEW DIAMOND STALL JACK AND ANVIL



NEW DIAMOND LOOP KNIFE



NEW DIAMOND NARROW HOOF KNIFE

Exciting News for Diamond in 2018

We are already seeing improvements in the tool line and expect more to come in 2018. Look for more details in upcoming Natural Angle issues and at www.diamondfarrierusa.com, www.farrierproducts.com, www.facebook.com/diamondfarrierusa and www.facebook.com/farrierproductdistribution.

DIAMOND TRACKER

Better Steel Quality

V-Crease

Clean punching

Sole Relief

Generic Pattern (flexibility in shaping saves you time and money)

BELLOTA RAZOR Plus

LONGER LIFE – ENHANCED PERFORMANCE

After a great deal of time in development and testing, Bellota is now producing the RAZOR Plus. Using a higher grade material for the RAZOR Plus, it has proven in farrier testing to have a longer life. In addition, the tooth design is more aggressive and requires only a very light stroke in the early stages of using the rasp.

"The RAZOR Plus is a very good rasp. I love it. I've done a lot of horses with it and it has held up well. I will buy more."

Dennis Passa, Minnesota

Get Your Foot Back

Vettec products help get the foot back to a healthy state whether due to injury, lameness or over-trimming.



Have a hoof problem? Contact us to talk it over.



1.800.483.8832 | info@vettec.com

US Customer Care 1.800.483.8832 | EU Customer Care +420 800 260 001 | www.vettec.net

THE NATURAL ANGLE is published to provide you with new and useful information about the industry. It is published through a cooperative effort of Vector and Liberty Horseshoe Nails, Bloom Forge, FPD, Kerckhaert Shoes, Vettec, Bellota, Mercury and your supplier.

Articles in this publication are the property of *The Natural Angle* and cannot be reprinted without express permission. For information concerning reprints, please contact Dan Burke, FPD, P.O. Box 1328, Shelbyville, KY 40066 or Email: fpd@farrierproducts.com.

If you have questions, comments or ideas concerning the articles published in the Natural Angle, please contact your distributor. We welcome your input. *The Natural Angle* is designed and edited by Graphic Response. n

THE NATURAL ANGLE

ONLINE ORDER ACCURACY GUARANTEED

\$10 FLAT RATE SHIPPING AND FREE SHIPPING ON ORDERS OVER \$100

FAST SHIPPING & EXCELLENT SELECTION

"Service you can count on"

Empire Farrier Supply

Since 1999



877-337-3367

www.empirefarriersupply.com

PRESORTED
FIRST CLASS
U.S. POSTAGE
PAID
HAGERSTOWN, MD 21740
PERMIT NO. 184

Empire Farrier Supply
42065 Zevø Dr. #15
Temecula, CA 92590
Return Service Requested