

# The Natural Angle

VOLUME 13: ISSUE 1

THIS NEWSLETTER PUBLISHED BY EMPIRE FARRIER SUPPLY

## Talent in the Trade

There are a lot of individuals in the farrier trade with talent for shoeing and blacksmithing. Some of the most interesting work they do is not on the foot but in special forged pieces, a hobby and passion among many farriers. Recently FPD had a pair of spurs produced by farrier Dan Wisely from Powderly, TX. These spurs were donated to an auction being held to help raise funds for a farrier undergoing cancer treatments.

Wisely used rasps as the main component of the spurs. The spurs he has produced are not just for conversation but in fact are used by riders that have requested specific design features. It's easy to see how they can become a topic of conversation with the detail and special look that rasps give to a piece.

A second piece that we have in the FPD office is a knife made by Jerry Pennington of Hot Springs, Arkansas. Jerry has spent most of his shoeing career on the race track. The knife is completely hand-made, from the blade (a Bellota Raptor rasp) to the handle (hedgeapple wood), quillon and all the other components. The image may not do justice to the actual size of the knife. The overall length is 13" and the blade is 2-1/4" wide by 7-3/4" long.

Jerry has been making knives for many years and worked with Claude Lambert on this knife. One of the markings on the knife is "JHU", made using his Journeyman Horseshoers Union stamp. Originally these stamps were used for shoes made by members of the JHU to help identify their work. The JHU is still in existence but membership is scattered and loosely organized, with most remaining members involved in race track work.



It's always interesting to see the blacksmithing talents come to the surface in the farrier trade. We will plan on including pieces in future issues – perhaps sparking your interest or motivating you to put your talents to work. If you have something you would like to share with us, please send a good image and description so we can work it into our future posts on *The HoofWall* blog on the internet or fit it into an issue of the Natural Angle. ■

*Blacksmithing photos can be emailed to Dan Burke at [dburke@farrierproducts.com](mailto:dburke@farrierproducts.com).*



TOOL SAFETY

# Grinders and Attachments

One of the most effective grinding attachments is the expander wheel. The diameter of the wheel gives an exponential increase to the speed of the grinder - allowing material to be taken off in less time and with less heat build-up. The speed of the wheels and the fact that it does not have any “tension adjustment” similar to a traditional belt sander, has made fit of belts a significant challenge. The serrated rubber material on the wheels is designed to expand and thus tighten the belt once it reaches full speed. However, getting a belt fit that allows the belt to be easily installed or removed and still tighten sufficiently in use is difficult. Any slight change in the length of the belt can make the fit noticeably looser or tighter. We found that there were many more problems as a result of loose belts so we chose to have the belt manufacturers target a length that can be very tight. This takes into consideration the manufacturers tolerances in production that can have enough variation to cause significant changes in the fit. This decision proved to reduce the risk of the belt sliding on start-up or in use, but also made installation and removal more tedious.

There are a number of precautions to take when using any grinding equipment. Expander wheels are no different. We saw a posting in a farrier bulletin board recently, warning not to run the wheel without a belt. This is one of the key instructions or warnings in the information that is included with the wheels. Two significant problems can occur. The rubber material can be damaged by expanding and making contact with the guard or the rubber can separate from the metal hub. Either of these problems causes

*Continued on page 3*



**FARRIER RIG WITH GRINDER ON SLIDE-OUT**

*FPD has been selling Baldor and other grinders and various attachments for a number of years as grinder set ups have become an integral part of the professional farrier's rig. There was a time that the term “grinder smith” was considered an insult in the trade. But today, many farriers have found grinders to be very useful in reaching their goals in shoe fit, safety and aesthetics in a more efficient manner.*



**ABOVE: GRINDER ALLOWS FOR EASIER “SAFING” OF SHOE**



**ABOVE: WORKING TOO CLOSE TO THE EDGE, WITH TOO MUCH PRESSURE MAY FORCE BELT TO SLIDE, EXPOSING RUBBER TO DAMAGE.**

# THE NATURAL ANGLE

Continued from page 2

problems with use and creates a dangerous situation for the user. If you have any damage to the rubber or find that the rubber has separated from the hub, you should stop using the wheel and replace it. The phenomenal belt speed of an expander wheel makes it even more important that the user wears gloves, eye and/or face shields. You should not position yourself right against the work area, in the event a belt breaks. Belts on all types of attachments should be checked often before use. This is important as well for an expander wheel to make sure there are not irregular wear points or excessive wear that might indicate a problem with the rubber material or a wheel that is not balanced.



**There are common problems and recommendations with use of abrasive belts no matter what kind of attachment you are using.**

1. Most grinding belts are designed to grind a variety of materials but grinding dissimilar materials on the same belt is not recommended. It typically reduces the life of the belt by clogging the belt. You should change the belt if you are changing the material you are grinding, e.g. – one belt for grinding aluminum and one for grinding steel. Grinding of pads, especially synthetic materials will also clog and reduce the effectiveness of your belts.
2. Clogged belts heat up quickly and can break causing injury or equipment damage.
3. Belts that show unusual wear points should be replaced since they are more likely to break, possibly causing injuries or damage to the equipment.
4. Positioning the work piece correctly against the wheel will increase efficiency and safety. See sketch above for details.
5. When grinding on the edge of the contact wheel or an expander wheel minimize pressure. Too much pressure or worn belt edges can lead to wear or damage to the contact wheel or expander wheel.
6. Many belts are one directional - indicated by an arrow on the inside of the belt. If there is no arrow, you can mount the belt regardless of rotation of attachment. ■



**ABOVE: OPERATION OF WHEEL WITHOUT BELT CAN CAUSE DAMAGE TO RUBBER SURFACE AND MAY EVEN ALLOW SEPARATION OF RUBBER FROM METAL HUB**

## PRODUCTS DESIGNED TO WORK WELL TOGETHER.



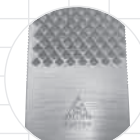
KERCKHAERT



BLOOM FORGE



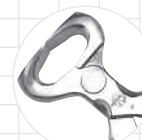
farrierproducts™



BELLOTA



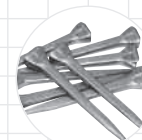
LIBERTY



FOOTPRO™

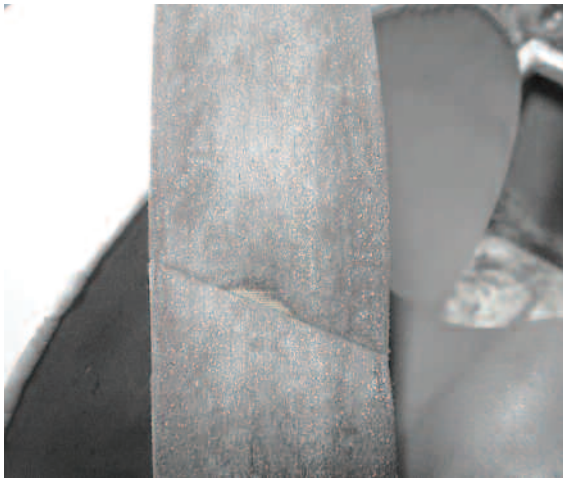


MERCURY

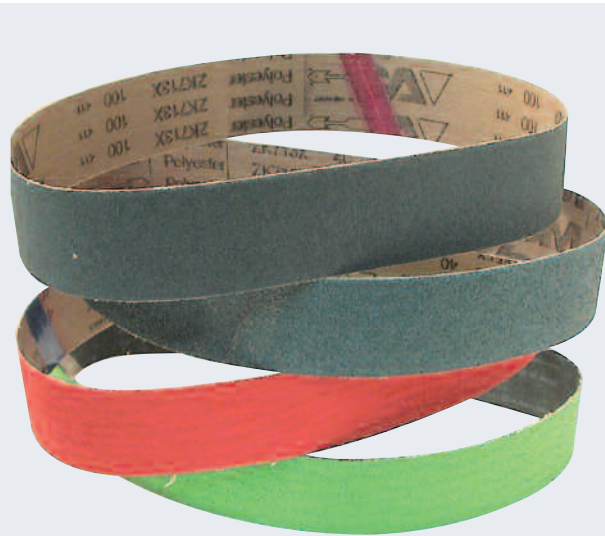


VECTOR

While every product in the **farrierproducts™ group** has a unique purpose, they have been designed to provide optimum results when teamed together. Only the highest quality products are included in this group. We know, as a professional farrier, you won't settle for less.



ABOVE: BELTS SHOWING WEAR POINTS POSSIBLY INDICATING WHEEL IMBALANCE



## BELT MATERIALS COMMONLY USED IN THE FARRIER MARKET

### ALUMINUM OXIDE (AO)

Often a brown material, used most often for maintenance of tools with finer grits (100, 120 and up). This material will not have good life when used to grind shoes or steel with coarser grits.

### ZIRCONIUM OXIDE

A particulate material that gives better life than straight AO, working well for general purpose grinding of many types of material. Often has coolant coating such as with 3M 577 or 877 belt series.

### CERAMIC

These belts will give the best life for metal use and many farriers have found these to be the best value even though they can be more expensive than Aluminum Oxide and some brands of Zirconium belts. Generally less expensive than 3M Zirconia. Common grit for grinding shoes is 40 on an expander wheel although they are available in coarser and finer grits.

### COMMON BELT GRITS

- 24-40 grit . . . . . aggressive grinds
- 60-80 grit . . . . . mid-range grinding
- 100+ grit . . . . . tool finishing/polishing

## NO COMPROMISE

Quality, Reliability and Availability.



### New Liberty 5 City

Engineered to meet the demand for a high performance forged nail.

#### FEATURES:

- precise and consistent specifications
- optimum clinching
- accurate bevels and points providing consistent driving and outstanding finish

# New Products

## KERCKHAERT SX ROLLER

Kerckhaert has introduced the SX Roller to their shoe line. With features similar to the Classic Roller, this shoe is an excellent choice for horses needing additional ease of breakover, whether for movement in performance, or simply more comfort because of injuries or chronic ailments. While this half round style boasts more ground surface than a true half round, it allows the ease of breakover half round shoes are noted for. The crease gives traction while not taking away from the rollover effect of the shoe.



### FEATURES:

- Enhanced breakover
- Lighter section of steel than Classic Roller
- SX Roller is in SX-8 weight class
- Sole Relief
- Punched for city or slim
- Unclipped and Front Only
- Available in sizes 00, 0, 1, 2 fronts

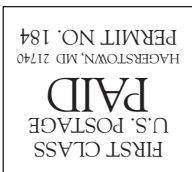
## BLOOM FORGE SPECIAL KNIVES



The new Bloom Forge Special Knife is designed with a more slender handle while retaining the highly regarded blades used on other Bloom knives. Offset blade. Blade length: 2-1/2"; handle length: 5-7/8"; right or left handed.

## KERCKHAERT STANDARD SERIES - PRODUCT ENHANCEMENT

As Kerckhaert continues to enhance the performance of their shoes, they are happy to announce the addition of Sole Relief to the Standard Series. Standards in sizes 00, 0, 1 and 2 with sole relief are now being shipped in the market.



Empire Farrier Supply  
42065 Zevo Dr. #15  
Temecula, CA 92590  
Return Service Requested

Empire Farrier Supply News

Please welcome  
Rebekah and Mary!

Both recently joined the  
EFS team!



The Catalogs Are Coming!

Soon we will have our new catalogs  
printed and ready for distribution.  
Please let us know if you are  
interested in receiving one.  
We will be happy to send it to you.

**NOW IN STOCK**

- **KERCKHAERT SX ROLLER**
- **KERCKHAERT STEEL COMFORT**
- **KERCKHAERT ALUM. COMFORT**
- **BALDOR GRINDERS**
- **HOOF BUFFER ATTACHMENTS**
- **EXPANDER WHEELS**

**Charity Golf Tournament**

Our annual golf tournament has been  
postponed until 2012. We will be hosting the  
event on a bi-annual schedule in the future.

We want to thank everyone who takes the time  
to come and have fun, golf, and raise money for  
REINS. Please spread the word about our great  
cause and bring someone new to our next event.

We may be holding the tournament  
at a new course but will be keeping  
the date in early November.  
See you on the Green!



[www.empirefarriersupply.com](http://www.empirefarriersupply.com) Toll Free (877) EFS-3367 [info@empirefarriersupply.com](mailto:info@empirefarriersupply.com)  
42065 Zevo Dr. #15 Temecula, CA 92590, Phone (951) 296-0046, Fax (951) 296-0045  
Empire Farrier Supply "Service You Can Count On"



**MANURE, MUD AND DEBRIS...  
NOT UNDER THIS PAD!**



Equi-Pak|Soft completely seals,  
supports and protects.



United States • 1700 East Hamann Road • Grand Cayman KY2008 • USA • 1 (800) 453-8837 • Europe • Zeevaan 14 • NL-3540 ED Utrecht • The Netherlands • +31 (0) 249 1623 [www.vettec.com](http://www.vettec.com)

THE NATURAL ANGLE is published to provide you with new and useful information about the industry. It is published through a cooperative effort of Vector Horseshoe Nails, Bloom Forge, FPD, Kerckhaert Shoes, Vettec, Bellota, Mercury and your supplier.

Articles in this publication are the property of *The Natural Angle* and cannot be reprinted without express permission. For information concerning reprints, please contact Dan Burke, FPD, P.O. Box 1328, Shelbyville, KY 40066 or Email: [fpd@farrierproducts.com](mailto:fpd@farrierproducts.com).

If you have questions, comments or ideas concerning the articles published in the *Natural Angle*, please contact your distributor. We welcome your input. *The Natural Angle* is designed and edited by Graphic Response. ■